



PRO ENERGY CO LTD. 朝朗有限公司

# 防火隔熱捲閘 FIRE RESISTANCE RATING ROLLER SHUTTER



**FIRE RESISTANCE TEST IN ACCORDANCE WITH SECTION 6 OF BS 476: PART 22: 1987**

Fully Insulated Single-screen Vertical Sliding Roller Shutter & Lateral Sliding Roller Shutter with Bi-parting Junction

## VERTICAL ROLLER SHUTTER

INTEGRITY - 4 hours

INSULATION - 1 hour



## LATERAL SLIDING ROLLER SHUTTER

INTEGRITY - 4 hours

INSULATION - 1 hour





# MODEL CVFS-240

Standard ~ BS476 PART 22: 1987

## FULLY INSULATED VERTICAL SLIDING ROLLER SHUTTER:

### Roller Shutter Data & Specification:

#### Achieve Fire Resistance Rating:

- Integrity ( 30 minute, 60 minute, 120 minute and 240 minute )
- Insulation ( 30 minute, 60 minute )

#### Size availability:

- Standard to 12 meters wide and 7 meters high of clear opening, Special made on request.

#### Shutter curtain:

- Galvanised Mild Steel / Grade 304 / Grade 316 Stainless Steel formed double-screen hollow section and filled ceramic fiber, Slat thick of hollow section profile is 0.8mm thick with 75mm high, and with 10mm thick ceramic blanket .

#### Guide rail:

- Galvanised Mild Steel / Grade 304 / Grade 316 Stainless Steel (size: 100mm x 80mm x 2mm thick)

#### Bottom Bar:

- Galvanised Mild Steel / Grade 304 / Grade 316 Stainless Steel angle frame(size: 50mm x 50mm x 3mm thick)

#### Operation:

- Automatic closed by activating fire alarm signal, or closed by Fusible Link.
- Single phase / Three phase motor including driving gear, limit switch, control panel.
- Push button switches on both sides of shutter.

#### Manual control device:

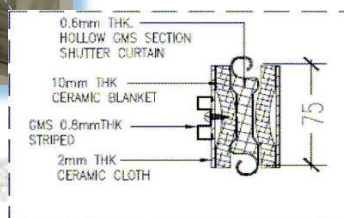
- Push button switch box made by steel shall be installed at 1200mm above floor level of both sides.

#### Manual override:

- By hand chain through motor (very slow and not suitable for frequent operation)

#### Shutter Hood:

- Insulated enclosure made by Durasteel board on the outer side, Promatect fire rated board on the inner side and ceramic blanket filled in between two fire rated board.



**RED** Fire and Façade Consultants  
RESEARCH ENGINEERING DEVELOPMENT FAÇADE CONSULTANTS LIMITED  
Fire and Façade Testing Laboratory  
怡和洋行有限公司 - 消防及外牆測試實驗室  
DD134, Lung Kwo Tan, Tuen Mun, N.T., Hong Kong

**HKAS**  
HONG KONG ACCREDITATION SCHEME  
Page 1 of 29

**FIRE RESISTANCE TEST IN ACCORDANCE WITH SECTION 6 OF BS 476: PART 22: 1987**  
On a Fully Insulated Single-screen Vertical Sliding Roller Shutter

Test Report No.: R17F44-1A  
Identification No.: Q17762-1  
Issue Date: 30 January 2018

Testing Location:  
RED Hong Kong Main Laboratory  
DD 134, Lung Kwo Tan, Tuen Mun,  
N.T., Hong Kong

Test Sponsor  
Centaline Roller Shutter Limited  
Flat F, 10/F, Roytery Industrial Building,  
15 Kin Fat Street, Tuen Mun, N.T., Hong Kong

APPROVED SIGNATORY:   
DATE: 30 JAN 2018  
Dr. YUEN Sai-wing, MROE (FIRE)

Hong Kong Accreditation Service (HKAS) has accredited this laboratory (HKAS 01-1757) under Hong Kong Laboratory Accreditation Scheme (HKLAS) for specific laboratory activities as listed in the HKAS directory of accreditation laboratories. The results shown in this test report were determined by this laboratory in accordance with its terms of accreditation. This report may not be reproduced except in full.

Tel: +852 2807 0100 Fax: +852 2442 4105 E: Red@red.com.hk W: www.red.com.hk

# MODEL CLFS-240 Standard ~ BS476 PART 22: 1987

## FULLY INSULATED LATERAL SLIDING ROLLER SHUTTER:

### Roller Shutter Data & Specification:

#### Achieve Fire Resistance Rating:

- Integrity ( 30 minute, 60 minute, 120 minute and 240 minute )
- Insulation ( 30 minute, 60 minute )

#### Size availability:

- Standard to 45 meters wide and 7 meters high clear opening, Special mode on request.

#### Shutter curtain:

- Galvanised Mild Steel / Grade 304 / Grade 316 Stainless Steel formed double-screen hollow section and filled ceramic fiber, Slat thick of hollow section profile is 0.8mm thick with 75mm high, and with 10mm thick ceramic blanket .

#### Top Guide Track:

- Galvanised Mild Steel / Grade 304 / Grade 316 Stainless Steel (size: 150mm x 3mm thick)

#### Leading Edge / Receiving Channel:

- Galvanised Mild

#### Operation:

- Automatic closed by activating fire alarm signal.
- Single phase / Three phase motor including driving gear, limit switch, control panel.
- Push button switches on both sides of shutter.

#### Manual control device:

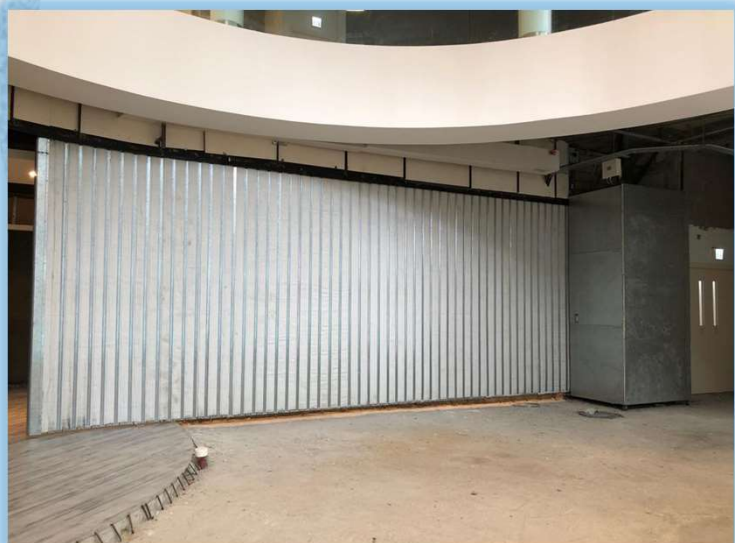
- Push button switch box made by steel shall be installed at 1200mm above floor level of both sides.

#### Manual override:

- By hand chain through motor (very slow and not suitable for frequent operation)

#### Shutter Hood:

- Insulated enclosure made by Durasteel board on the outer side, Promatect fire rated board on the inner side and ceramic blanket filled in between two fire rated board.



**RED** RESEARCH ENGINEERING DEVELOPMENT FAÇADE CONSULTANTS LIMITED -  
Fire and Façade Consulting  
香港紅磡消防工程發展有限公司 - 消防及建築外牆測試中心  
20134, Lung Kwu Tan, Tuen Mun, N.T., Hong Kong

**HKAS**  
HONG KONG ACCREDITATION SERVICE  
Page 1 of 30

**FIRE RESISTANCE TEST IN ACCORDANCE WITH SECTION 6 OF  
BS 476: PART 22: 1987**  
On a Fully Insulated Single-screen Lateral Sliding Roller Shutter with Bi-parting Junction

Test Report No.: R17D26-2A  
Identification No. Q17E07-2  
Issue Date: 25 August 2017

Testing Location:  
RED Hong Kong Main Laboratory  
DD 134, Lung Kwu Tan, Tuen Mun,  
N.T., Hong Kong

Test Sponsor  
**Centaline Roller Shutter Limited**  
Flat F, 10/F, Roytery Industrial Building,  
15 Kin Fat Street, Tuen Mun, N.T., Hong Kong

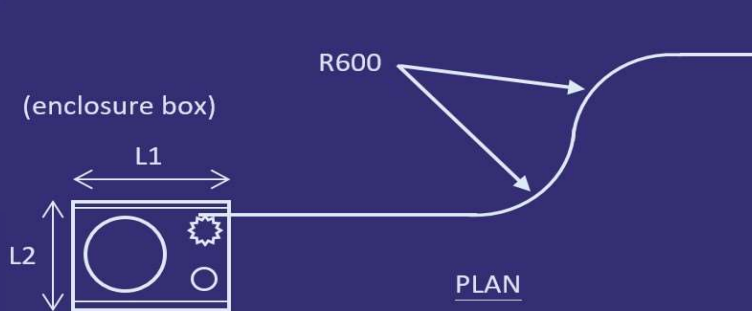
APPROVED SIGNATORY:   DATE: 25 AUG 2017  
Dr. YUEN Sai-wing, MPhil (FIRE)

Hong Kong Accreditation Service (HKAS) has accredited this laboratory (HKLAS 091-183) under Hong Kong Laboratory Accreditation Scheme (HKLAS) for specific laboratory activities, as listed in the HKLAS directory of accreditation laboratories. The results shown in this test report were determined by this laboratory in accordance with its terms of accreditation. This report may not be reproduced except in full.

T: +852 2807 0930 F: +852 2642 4105 E: fire@red.com.hk W: www.red.com.hk



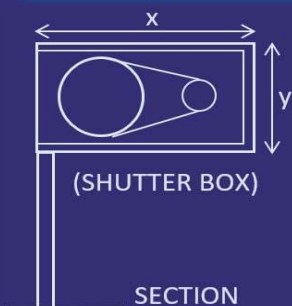
## MODEL CLFS-240 Lateral Sliding Roller Shutter



Dimensions of enclosure box (L1 & L2)

Shutter Width	L1 (mm)	L2 (mm)
7m	1300	1000
10m	1400	1200
12m	1450	1250

## MODEL CVFS-240 Vertical Sliding Roller Shutter



Roller Shutter Dimension

Width	Height	x (mm)	y (mm)	Motor side	non-motor side
2.5m to 7m	2.5m to 3m	760	650	300	250
7.1m to 9m	3.1m to 4.5m	960	750	350	300
10m	3.5m	1200	800	400	350
11m	3.5m	1250	900	425	375
12m	3.5m	1250	900	450	400

