



PRO ENERGY CO LTD. 朝朗有限公司

防火捲閘 **FIRE RESISTANCE RATING ROLLER SHUTTER**



**FIRE RESISTANCE TEST IN ACCORDANCE WITH SECTION 8
OF
BS 476: PART 22: CLAUSE 8: 1987**

VERTICAL ROLLER SHUTTER
INTEGRITY - 4 hours



LATERAL SLING ROLLER SHUTTER
INTEGRITY - 4 hours



MODEL CVF-240

Standard ~ BS476 PART 22: 1987

INTEGRITY VERTICAL SLIDING ROLLER SHUTTER:

Roller Shutter Data & Specification:

Achieve Fire Resistance Rating:

- Integrity (30 minute, 60 minute, 120 minute and 240 minute)

Size availability:

- Standard to 12 meters wide and 7 meters high of clear opening, Special made on request.

Shutter curtain:

- Galvanised Mild Steel / Grade 304 / Grade 316 Stainless Steel single slat, Slat thick are 1.0mm thick with 85mm high.

Guide rail:

- Galvanised Mild Steel / Grade 304 / Grade 316 Stainless Steel (size: 75mm x 28mm x 1.2m thick)

Bottom Bar:

- Galvanised Mild Steel / Grade 304 / Grade 316 Stainless Steel angle frame(size: 50mm x 50mm x 3mm thick)

Operation:

- Automatic closed by activating fire alarm signal, or closed by Fusible Link.
- Single phase / Three phase motor including driving gear, limit switch, control panel.
- Push button switches on both sides of shutter.

Manual control device:

- Push button switch box made by steel shall be installed at 1200mm above floor level of both sides.

Manual override:

- By hand chain through motor (very slow and not suitable for frequent operation)

Shutter Hood:

- If required, Galvanised Mild Steel Sheet / Grade 304 / Grade 316 Stainless Steel Sheet of 1.0mm fixed onto GMS angle frame.



MODEL CLF-240 Standard ~ BS476 PART 22: 1987

INTEGRITY LATERAL SLIDING ROLLER SHUTTER:

Roller Shutter Data & Specification:

Achieve Fire Resistance Rating:

- Integrity (30 minute, 60 minute, 120 minute and 240 minute)

Size availability:

- Standard to 45 meters wide and 7 meters high clear opening, Special mode on request.

Shutter curtain:

- Galvanised Mild Steel / Grade 304 / Grade 316 Stainless Steel are 1.0mm thick with 85mm high.

Top Guide Track:

- Galvanised Mild Steel / Grade 304 / Grade 316 Stainless Steel (size: 150mm x 3mm thick)

Leading Edge / Receiving Channel:

- Galvanised Mild Steel / Grade 304 / Grade 316 Stainless Steel

Operation:

- Automatic closed by activating fire alarm signal.
- Single phase / Three phase motor including driving gear, limit switch, control panel.
- Push button switches on both sides of shutter.

Manual control device:

- Push button switch box made by steel shall be installed at 1200mm above floor level of both sides.

Manual override:

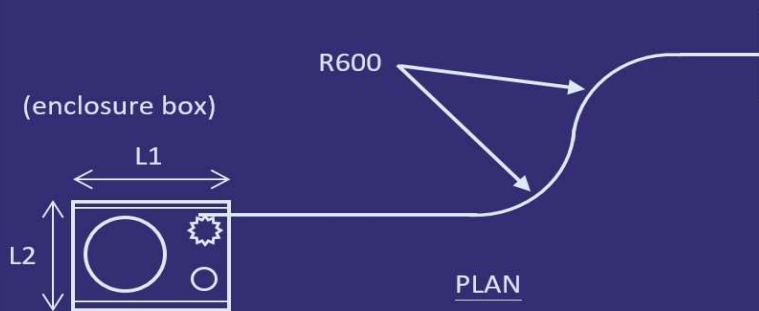
- By hand chain through motor (very slow and not suitable for frequent operation)

Shutter Hood:

- If required, Galvanised Mild Steel Sheet / Grade 304 / Grade 316 Stainless Steel Sheet of 1.0mm fixed onto GMS angle frame.



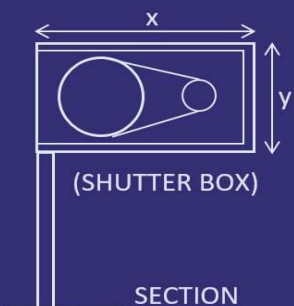
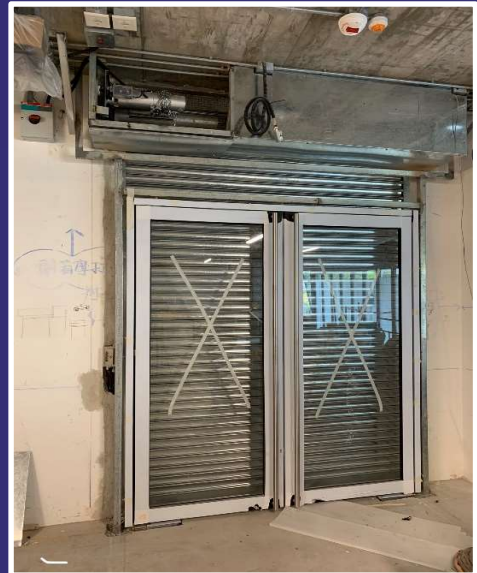
MODEL CLF-240 Lateral Sliding Roller Shutter



Dimension of enclosure box (L1 & L2)

Width	L1 (mm)	L2 (mm)
7m	1000	900
10m	1200	1000
12m	1200	1100
11m	3.5m	900

MODEL CVF-240 Vertical Sliding Roller Shutter



Headroom dimension

Width	Height	x (mm)	y (mm)	Motor side	non-motor side
2.5m to 7m	1.5m to 3m	650	500	200	150
7.1m to 7m	3.1m to 4.5m	750	550	200	200
10m	3.5m	850	650	250	200
11m	3.5m	900	650	250	200
12m	3.5m	1000	650	250	200

